

***MAJOR***  
*Drilling*

DURALITE 100 DRILL MOVE



## Components

### And their Locations

All up there are 8 Steps for each Setup or Pack up



# Setup Procedure

## **8 Steps**

4 Sensor Connections

Power Connection

Stow Away Draw Wire Tag

Starlink Connection

Rest Rock5 Unit on Control Panel

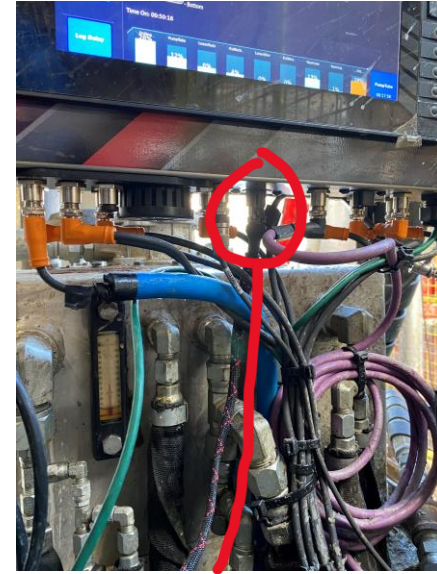
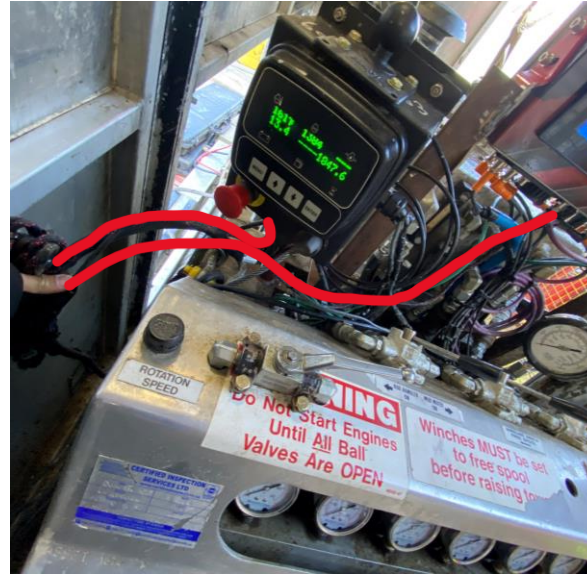
## 1 / 8 – Mount Rock5 - Setup

- Once the Drill is ready to set up, Unstrap the Rock5 Unit and Mount back on Bracket as shown in the photo.



# 2 / 8 – Power Harness - Setup

- When Setting up the drill, Unroll the engine control unit and cables.
- secure to the Engine Control Unit to Power Pack post.
- Unroll the connected 2 Pin Deutz Plug and plug into the Power Socket of Rock5 Unit.



## 3 / 8 - Water Flow - Setup

- Remove the Electric Tape and Apply Di-Electric to the electrical connector.
- Once the Water tank unit is secured, Connect the Water Flow's Connector that is zip tied to the hydraulic hoses.



## 4 / 8 – Head RPM - Setup

- Remove Electrical Tape and Apply Di-Electric Grease to both end of connectors.
- Connect the Connector zipped tied with the Quick Connect Hydraulic Hoses.



## 5 / 8 – Wireline RPM - Setup

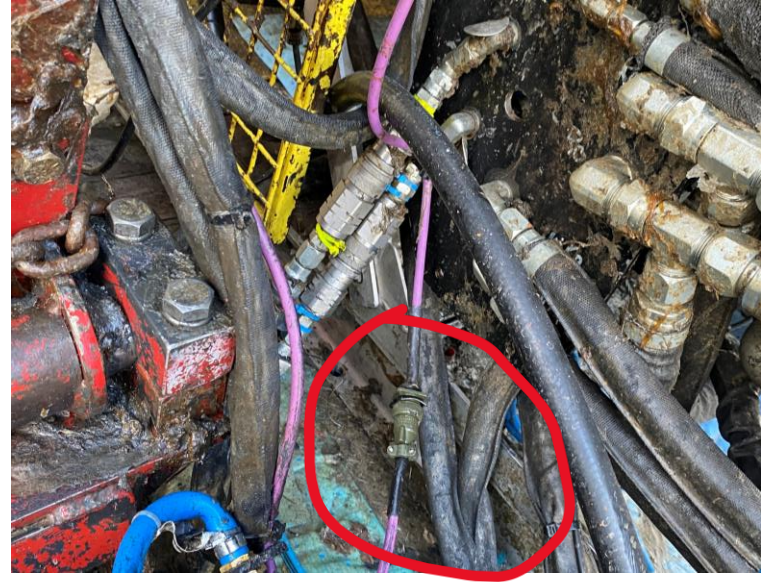
- Once the Wireline Drum is secured, Remove Electrical Tape
- Apply Di-Electric Grease to Connectors
- Plug in the two connectors circled in the photo.





## 6 / 8 – Mast Angle - Setup

- Once the Mast is Secure to the drill, Connect the AMP Connector to connect the Head Position and Mast Angle into the system.
- Apply Di-Electric Grease to protect against Corrosion and General Damage



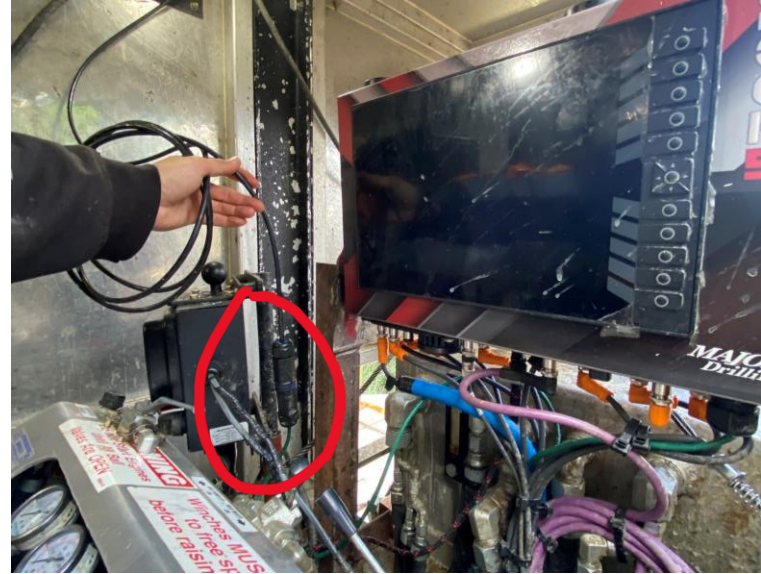
## 7 / 8 – Head Position- Setup

- Once the Mast is Secure to the drill,  
Connect the AMP Connector
- Carefully pull the draw wire on
- The Head Position and Mast Angle are  
Powered and Connected through the  
1 Cable (CAN)



# 8 / 8 – Starlink - Setup

- Once the roof is secured, Connect the IP Rated Plastic Connector.



# Pack up Procedure

## **8 Steps**

- Mount Rock5 Unit on Control Panel.
- Power Plug Connection.
- 4 Sensor Connections.
- Re-attach Draw wire Tag.
- Connect Starlink.

## 1 / 8 – Power Harness – Pack up

- When packing up the drill, Unplug the 2 Pin Deutsche Power Plug from the bottom of the box
- Roll the Harness up as you usually would just remembering to include the Rock5 Power Lead that should be zip tied to the Existing engine harness.
- Tape up the Power Lead with electrical tape to ensure no dirt gets in the plug during transit



## 2 / 8 – Water Flow – Pack up

- When Packing Drill up, Unplug the cables by the water tank and roll up with Hydraulic Hoses.
- Tape up both ends of the connector with electrical tape to ensure no dirt gets in the plugs during transit



## 3 / 8 – Head RPM – Pack up

- When packing up, Disconnect the Connector before rolling up the Hydraulic Hoses
- Tape up both ends of the connector with electrical tape to ensure no dirt gets in the plugs during transit



## 4 / 8 – Wireline RPM – Pack up

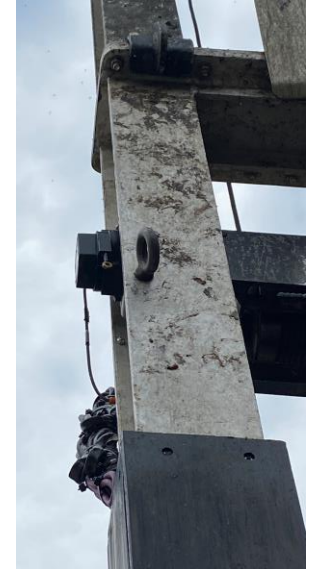
- When packing up, Disconnect the Connector.
- Tape up both ends of the connector with electrical tape to ensure no dirt gets in the plugs during transit





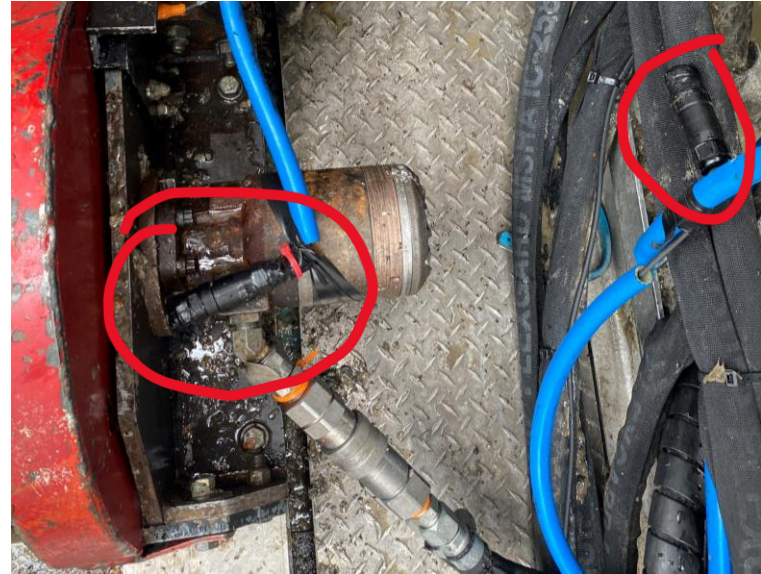
## 5 / 8 – Head Position – Pack up

- When packing up, Disconnect the Connectors and tape up with Electrical Tape.
- Ensure the Connectors are free of tangle before lifting
- Stow away the Draw wire Tag and slowing retract back into sensor.



## 6 / 8 – Wireline RPM – Pack up

- Once the Mast is Secure to the drill, Connect the AMP Connector
- When packing up, Disconnect the Connector.
- The Head Position and Mast Angle are Powered and Connected through the 1 Cable (CAN)



## 7 / 8 – Starlink – Pack up

- When packing up, Disconnect the Connector. Roll the Cable up so it does not get tangled in transit.
- Try not to stack any panels on top of the Starlinks Plastic Case.
- Tape up both ends of the connector with electrical tape to ensure no dirt gets in the plugs during transit



# 8 / 8 – Rock5 – Pack up

- When packing up, Unbolt from Mounting Brackets, Lay on Control Panel.
- Use rags and matting to form a soft barrier between the Rock5 and the Control Panel.
- Use a ratchet strap to gently secure the Rock5 to the Control Panel for Transport.

