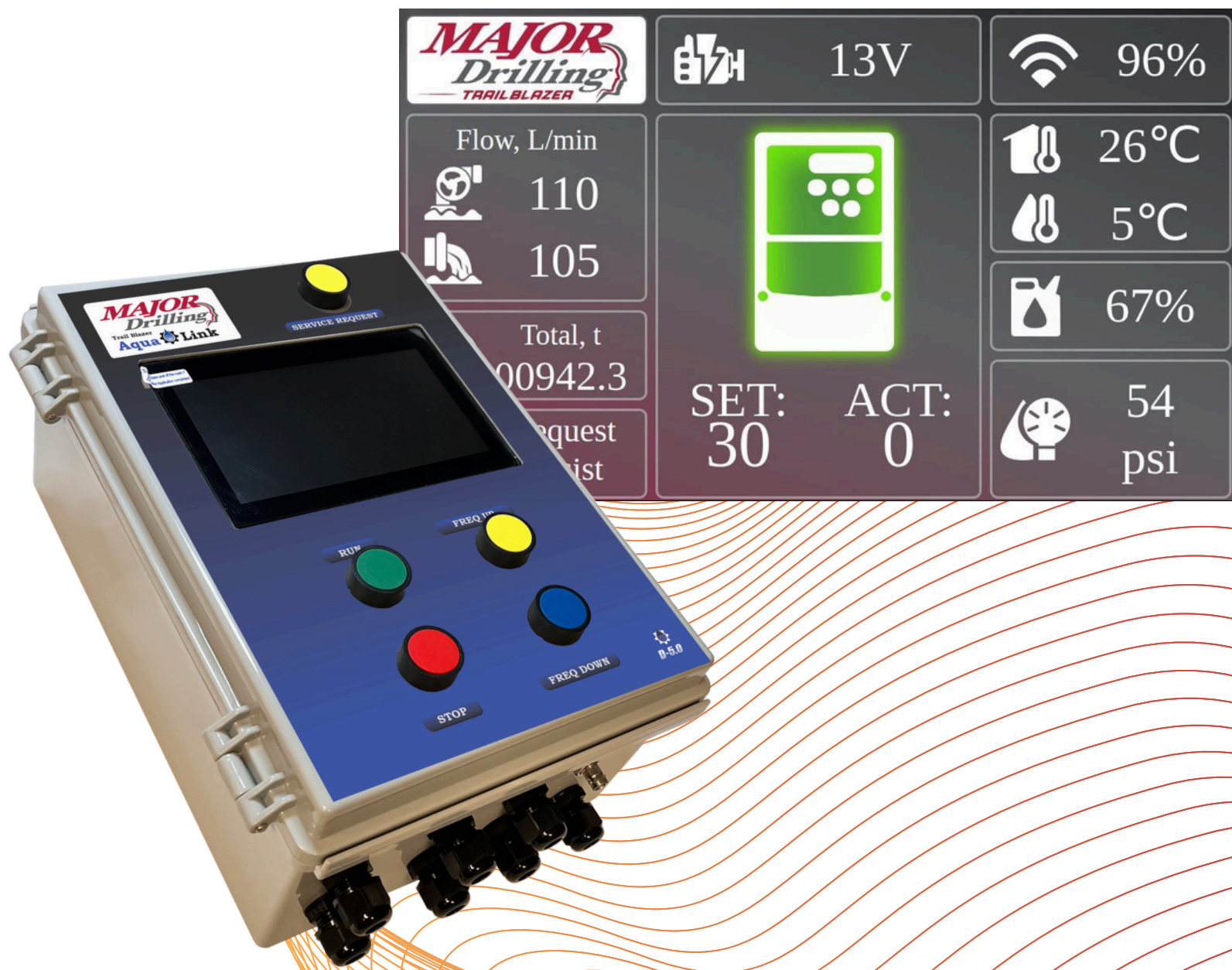


MAJOR
Drilling
TRAILBLAZER

AquaLink



*MAJOR
Drilling*

Introduction

TrailBlazer AquaLink

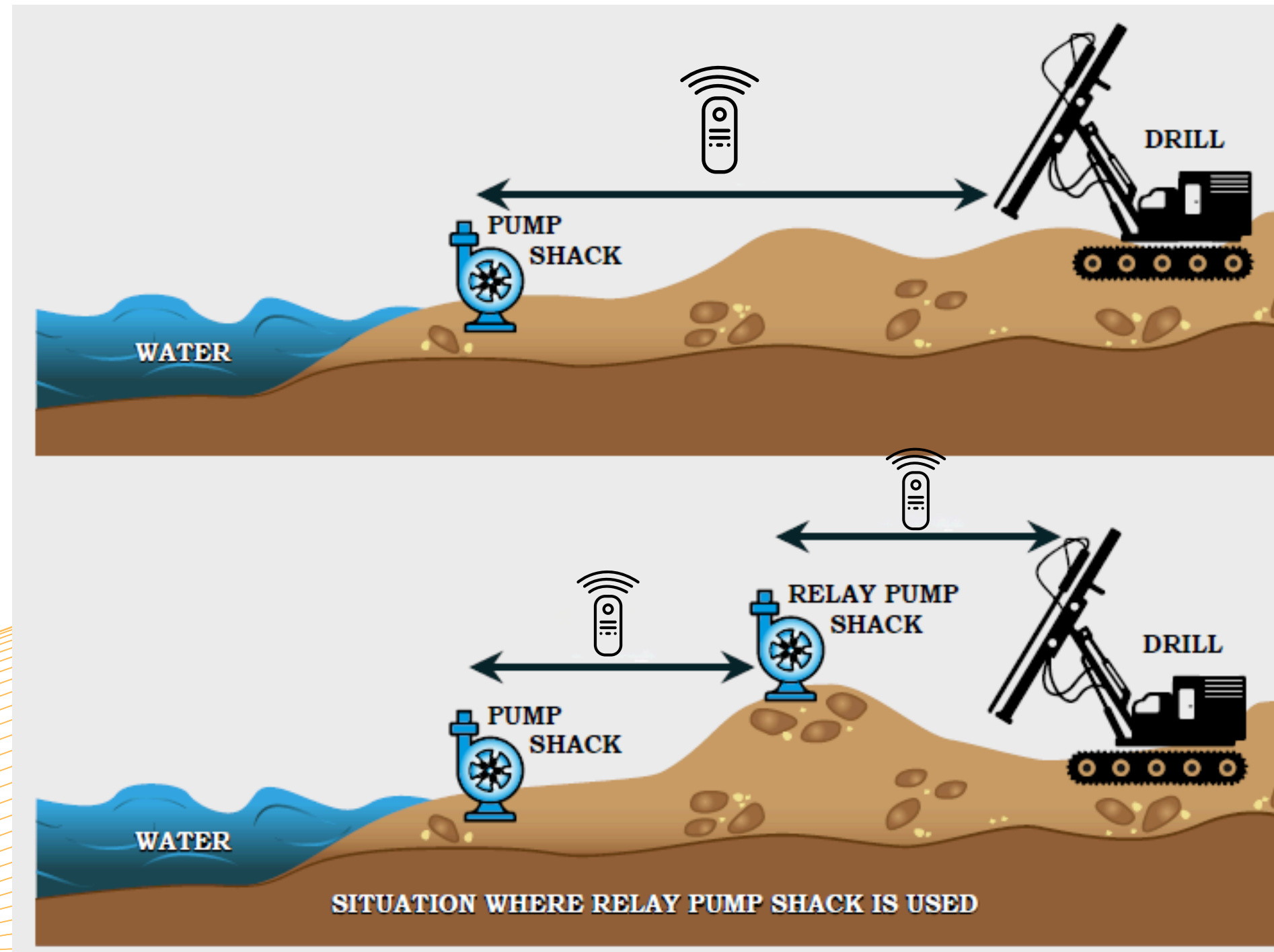
We're maximizing efficiency and minimizing environmental impact

Our unique control system allows you to remotely control and monitor the state of your drill's water supply pump system, ensuring optimal water management and operational efficiency.



How it works: Radio Signal Remote Control*

MAJOR
Drilling



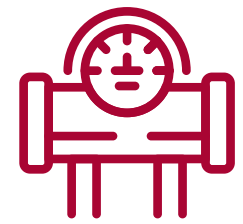
*Tested up to 9km in distance in even, unobstructed terrain

AquaLink Key Features

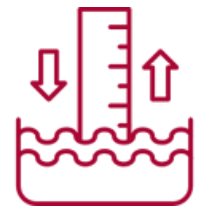
MAJOR
Drilling



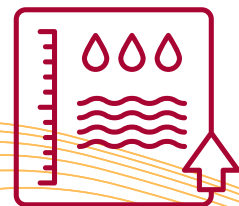
Remote adjustment of water flow in real-time



Water intake measurement from the source (keeping the totals)



Water volume at the source (keeping the totals)



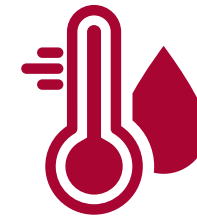
Volume recording project totals



Fuel level monitoring



Ambient temperature at the source



Water temperature at the source and destination



Water Pressure at the source to detect leak



Motor fan belt failure alarm; battery and alternator voltage alarm



Paging between shacks



Who Benefits from AquaLink?

AquaLink ensures optimal water management and operational efficiency by monitoring and adjusting water pump performance in real-time, offered exclusively by Major Drilling.

Our Crews

With its **remote long-range capabilities**, crews can now monitor the active state of seven key components of their water management system. AquaLink puts control back into the hands of drill crews with the use of this **real-time data** on site.

Our Clients

Our unique systems **minimizes water consumption per meter drilled** by allowing crews to remotely control flow volumes and monitor the state of their drill's water supply pump system from a distance. Effectively allowing clients to **minimize water pump related delays** and drill more meters!

The Drilling Industry

With its remote long-range, real-time data capabilities, AquaLink **optimizes water management and operational efficiency**. This innovative system not only optimizes the way you drill, but also sets a new industry standard for sustainability.

Dashboard Metrics



The dashboard displays various metrics for the MAJOR Drilling TRAILBLAZER system. It features a central image of the device and several data panels. Callouts on the left and right sides identify specific metrics.

Metric	Value
Remote Power Monitoring	13V
Real Time Data	96%
Water flow tracking	110 L/min
Temperature tracking	26°C
Fuel Monitoring	5°C
Volume tracking	00942.3 t
Fuel Monitoring	67%
Water Pressure tracking	54 psi
Request Assist	SET: 30, ACT: 0

AquaLink in the Field



AquaLink Remote Valve

MAJOR
Drilling

Our AquaLink Remote Valve control system is designed to adjust the volume of the delivered water from source to the drill; allowing the operator **wireless control over the amount of consumed water** over long distances. The system allows water flow to be continuous, protecting the pump from overloading. While the three-way valve enables excess water to be returned back to the source.



Trailblazer Solutions Suite

These other offerings are designed to enhance the efficiency, safety, and sustainability of drilling projects.

MAJOR
Drilling

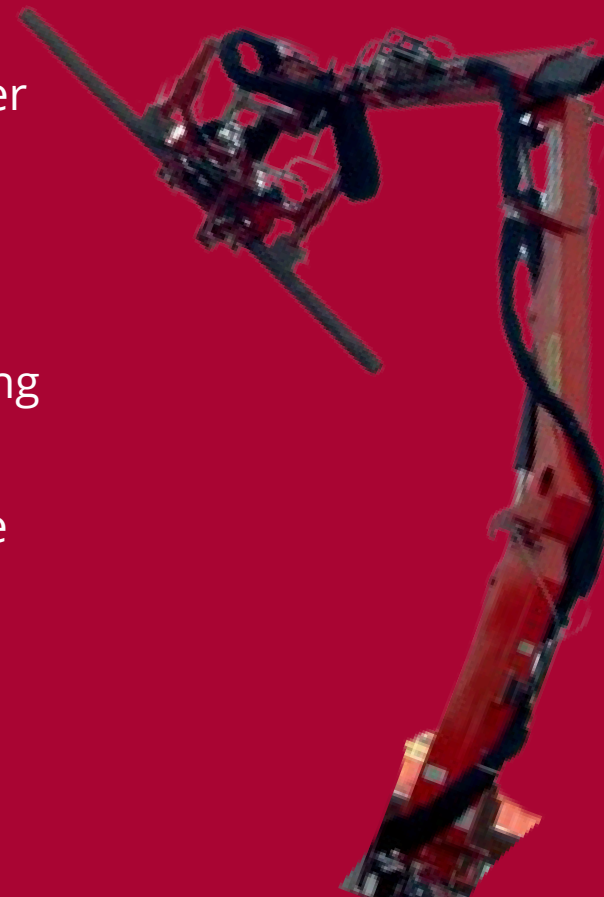
Rock5

Our advanced Rock5 technology optimizes drill performance and safety. With adaptability to various drill models, it offers an in-house designed dashboard that tracks drill function pressures, water usage and much more.



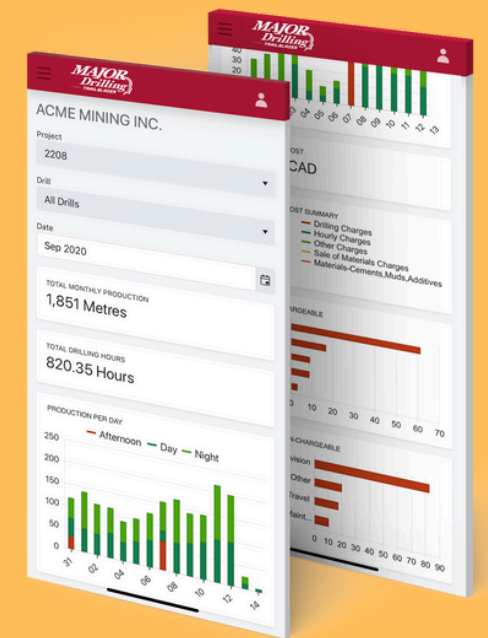
SafeGrip

Our in-house rod handler solutions offer advanced safety, providing equipment and capabilities that ensure secure handling and operation during drilling activities while maintaining productivity.



MTB Mobile + Portal

MTB Mobile captures daily drill reports electronically from the field and submits them directly into our Time & Billing system. Our Portal then provides access to these reports in real-time.



Global Capabilities

Major Drilling is a leading **specialized drilling** company with a global presence, delivering exceptional results on the toughest sites. Leveraging our extensive experience, modern diversified drilling fleet, and commitment to **safety**, we **partner** with customers **worldwide**.

Our services include surface and underground drilling, directional drilling, dewatering, and more, ensuring quality, safety, and outstanding results. With branch locations across North and South America, Europe, Africa, Asia, and Australia, Major Drilling is equipped to meet the unique needs of every project.

MAJOR
Drilling



OVER
700
DRILLS

MORE THAN
5000
EMPLOYEES

OPERATING ON
5
CONTINENTS



TrailBlazer
AquaLink

Questions?

Thank you!

www.majordrilling.com/geosolutions