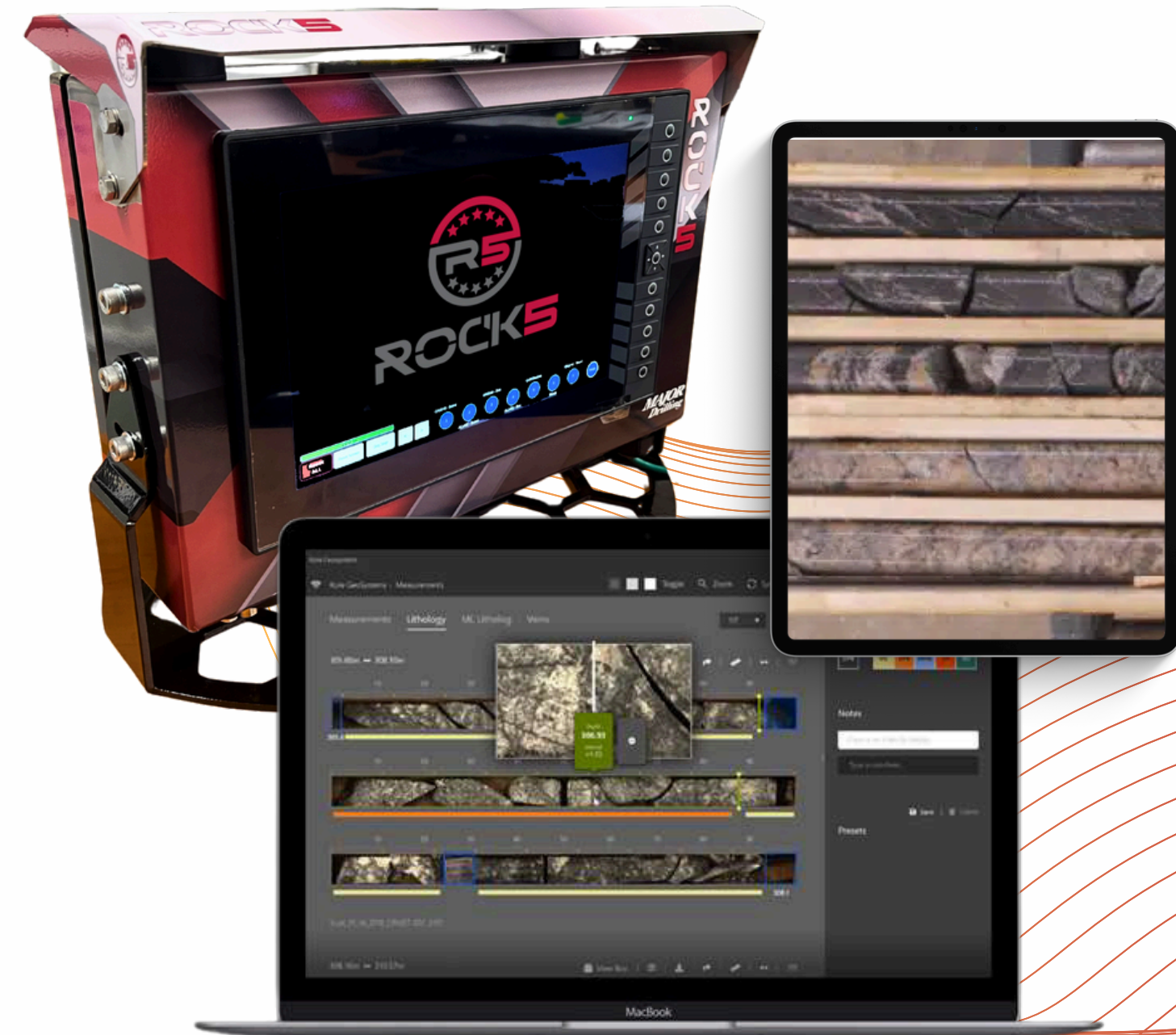


**MAJOR**  
*Drilling*

# ***Drillside GeoSolutions***

by Major Drilling



# Our Vision

We will be the mineral exploration and mining industry's **go-to provider of drillside orebody intelligence**, ever building on our powerful history of traditional drilling services and our future of cutting-edge technology-driven innovations.

We are committed to **integrating technologies that enhance our customers' safety, productivity and efficiency**. We are confident our optimized services will bring value and **maximize their exploration investment** as we move into the future of mining, together.

# Global Capabilities

Major Drilling is a leading **specialized drilling** company with a global presence, delivering exceptional results on the toughest sites. Leveraging our extensive experience, modern diversified drilling fleet, and commitment to **safety**, we **partner** with customers **worldwide**.

Our services include surface and underground drilling, directional drilling, dewatering, and more, ensuring quality, safety, and outstanding results. With branch locations across North and South America, Europe, Africa, Asia, and Australia, Major Drilling is equipped to meet the unique needs of every project.

**MAJOR**  
*Drilling*



OVER  
**700**  
DRILLS

MORE THAN  
**5000**  
EMPLOYEES

OPERATING ON  
**5**  
CONTINENTS

# Solutions

Our offerings include in-house Trailblazer technology; along with partners DGI GeoScience, known for its precise borehole survey equipment; and KORE GeoSystems, which delivers real-time core logging and orebody intelligence.

*MAJOR  
Drilling*



- **Rock5** drillside data analytics system improves safety and productivity
- The **AquaLink** remote water pump system conserves water and optimized flow control
- **SafeGrip** automated rod handling technology advances drill safety and efficiency
- Ask about our **MTB portal** and more ongoing innovations



- DGI borehole **data acquisition services** now available drillside
- **Orebody imaging** available earlier with complete, accurate detail
- **Geological consulting**



- KORE automation **increases the speed of core logging**
- Increase productivity, consistency with **enhanced data insights**



These offerings from Major Drilling's Trailblazer suite of solutions are designed to enhance the efficiency, safety, and sustainability of drilling projects.



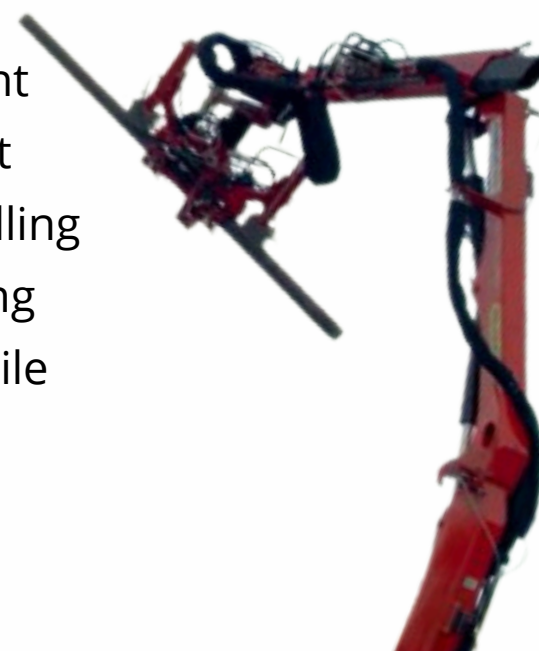
Rock5

## Rock5

Our advanced Rock5 technology optimizes drill performance and safety. With adaptability to various drill models, it offers an in-house designed dashboard that tracks drill function pressures, water usage and much more.

## SafeGrip

Our in-house rod handler solutions offer advanced safety, providing equipment and capabilities that ensure secure handling and operation during drilling activities while maintaining productivity.



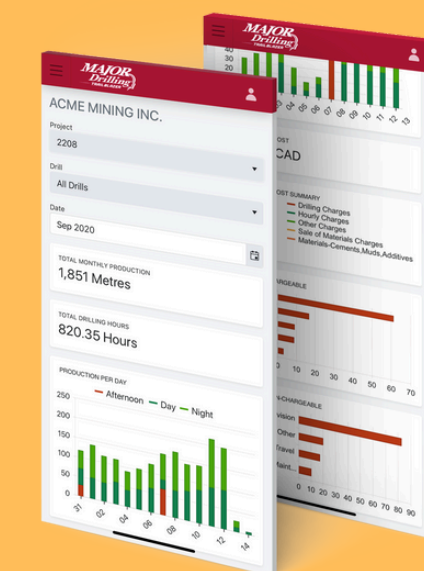
## AquaLink

A cutting-edge solution for water management in drilling projects, AquaLink enhances water usage efficiency and sustainability.



## MTB Mobile + Portal

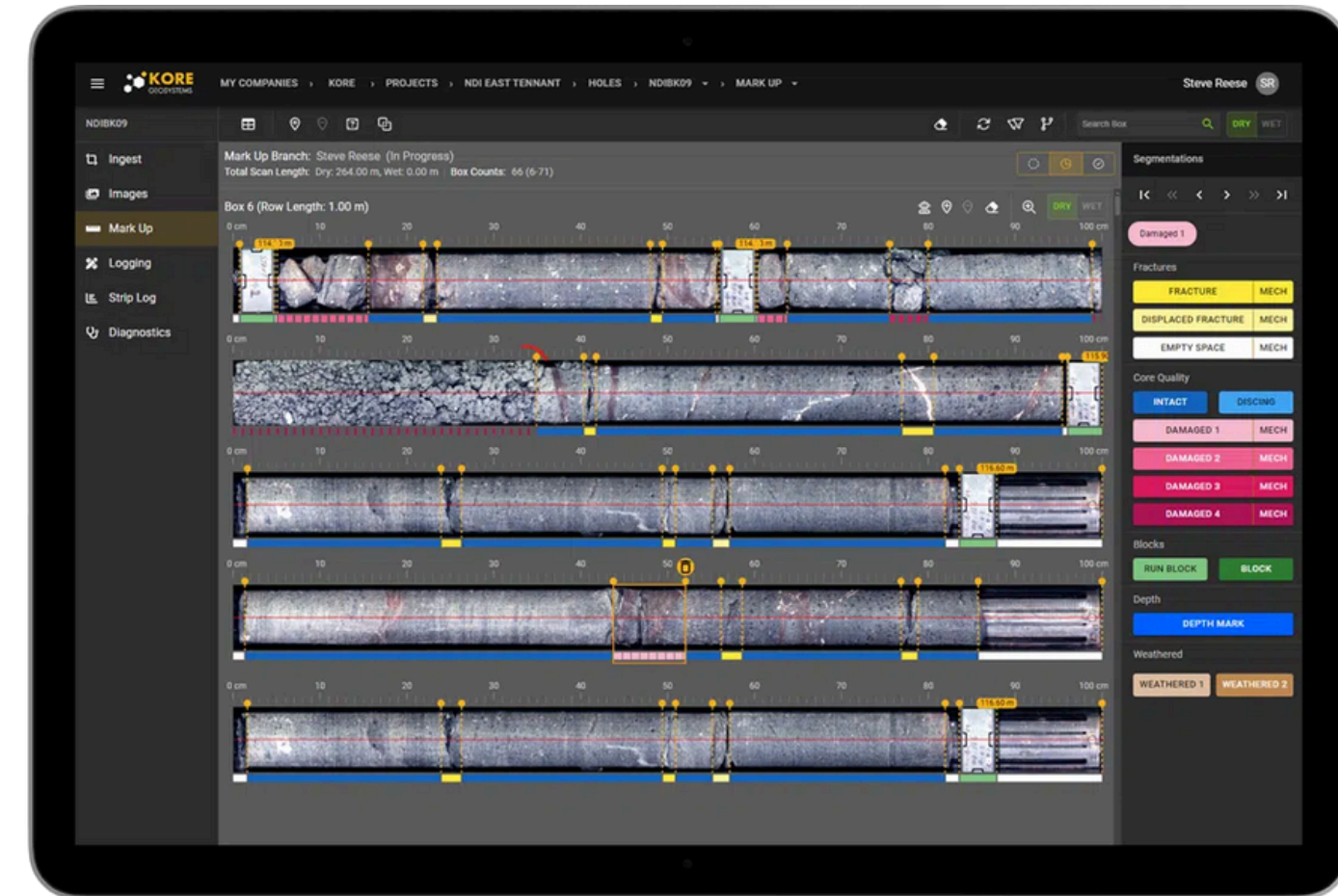
MTB Mobile captures daily drill reports electronically from the field and submits them directly into our Time & Billing system. Our Portal then provides access to these reports in real-time.





KORE Geosystems is collaborating with Major Drilling teams to enhance the value extracted from geological data, supporting teams process across the mining industry. Together, we will collect and integrate geological data tailored to the needs of our clients. This collaboration leverages intelligently designed integrated hardware and software solutions, powered by AI, to provide comprehensive support for mining operations.

- **AI Assisted Logging**
- **Speed & Consistency**
- **Real-Time Online Availability**



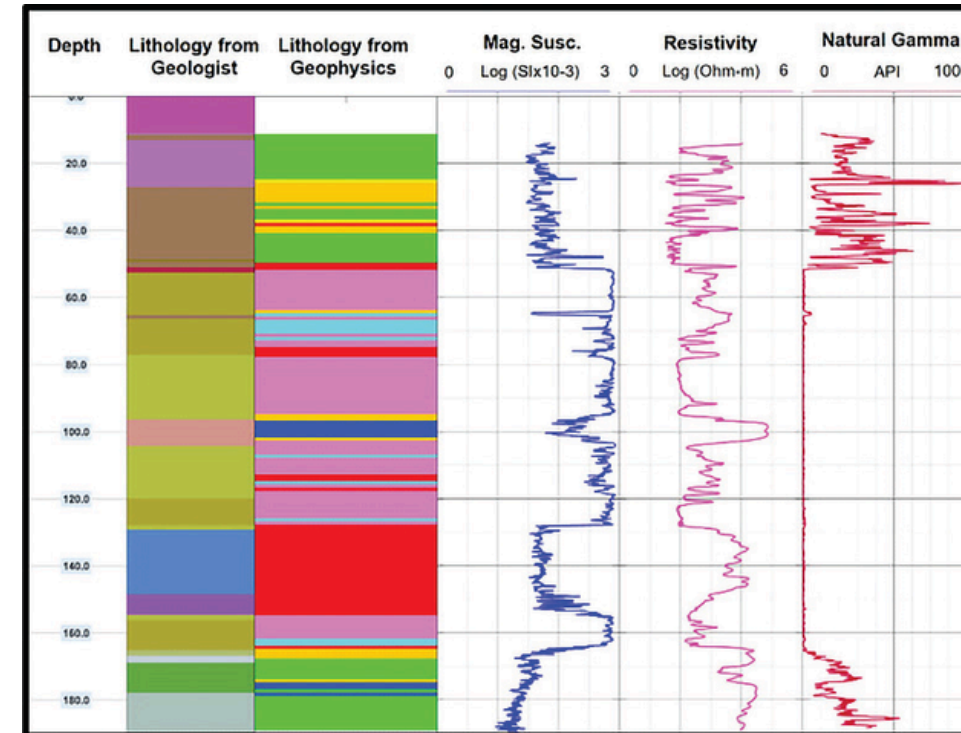


DGI Geoscience services are essential for decision-making and risk assessment in geological, environmental, and geotechnical investigations. By partnering with Major Drilling teams, they are committed to delivering value consistently to various drilling projects. Together, we strive to produce accurate, fast, and meaningful results, ensuring comprehensive support for all our clients.

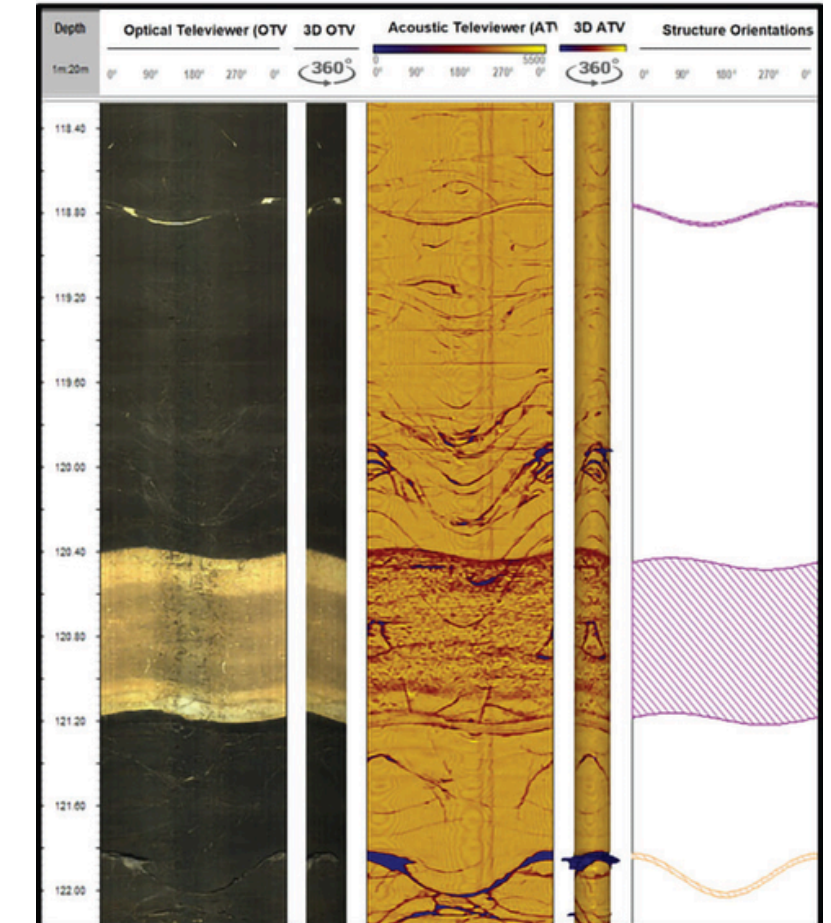
- **Downhole Tools**

- **Imaging**
- **Geophysical**
- **Hydrogeological**
- **Directional & Hole Inspection**

- **Geological Consulting Services**



### Planar Feature Analysis



---

**Drillside  
GeoSolutions**

A decorative graphic consisting of numerous thin, orange, wavy lines that flow from the top left towards the bottom right, creating a sense of movement and depth.

***MAJOR***  
***Drilling***

**Questions?**

**Thank you!**

**Website**

[www.majordrilling.com/geosolutions](http://www.majordrilling.com/geosolutions)