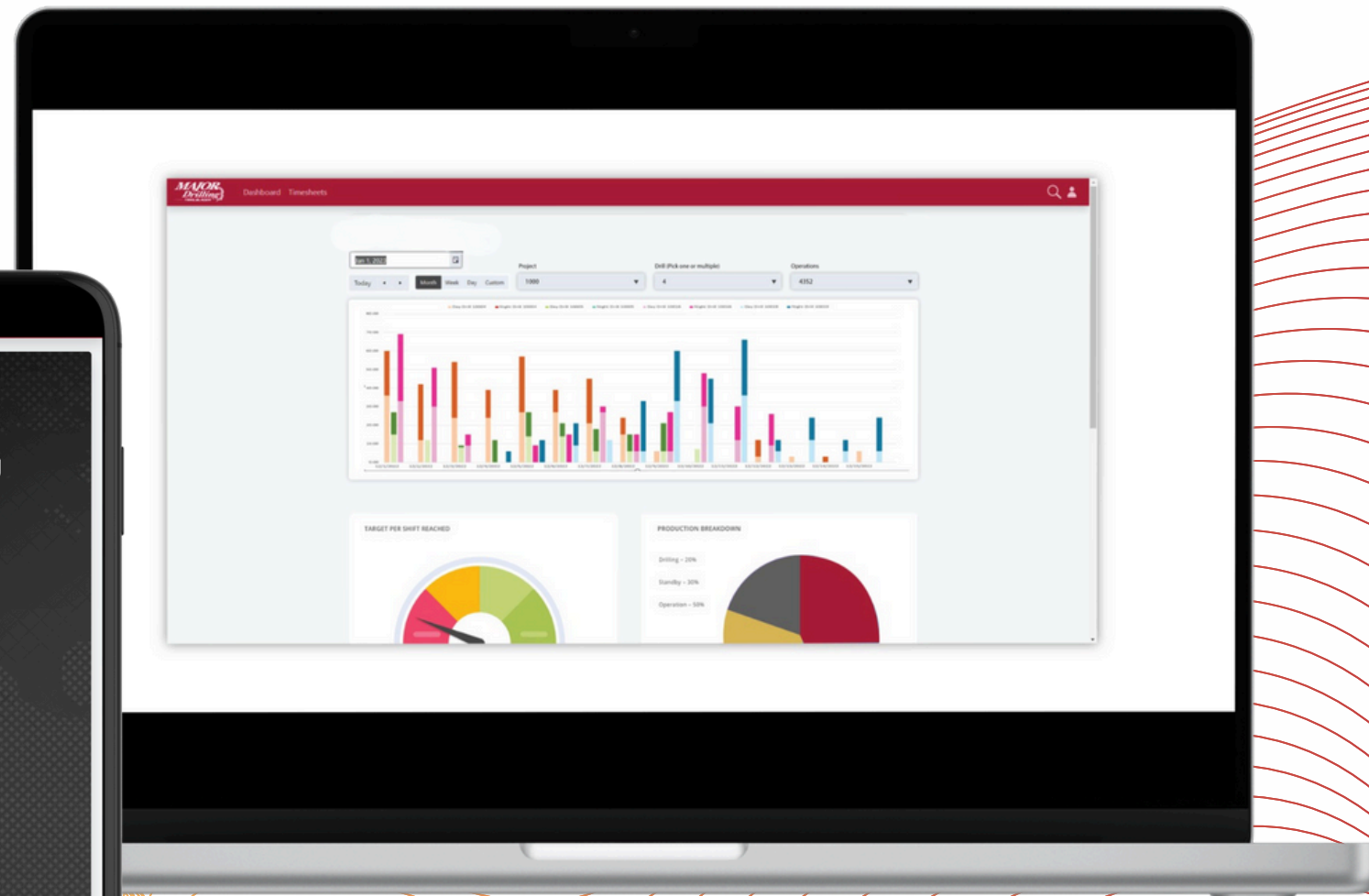
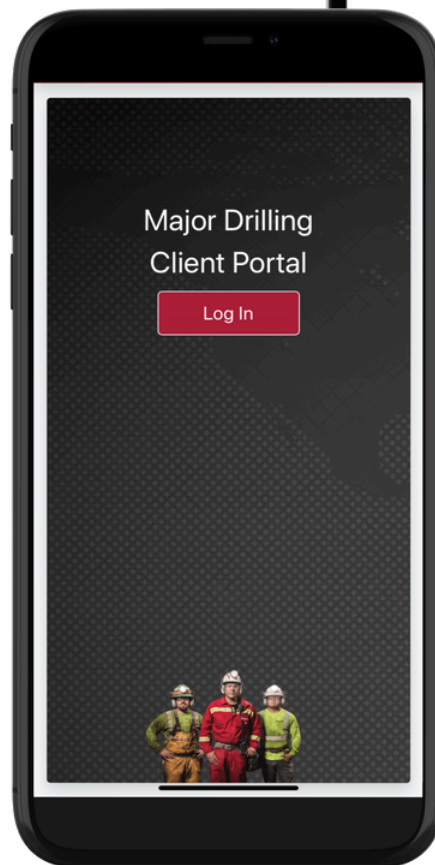




# MTB Mobile & Portal

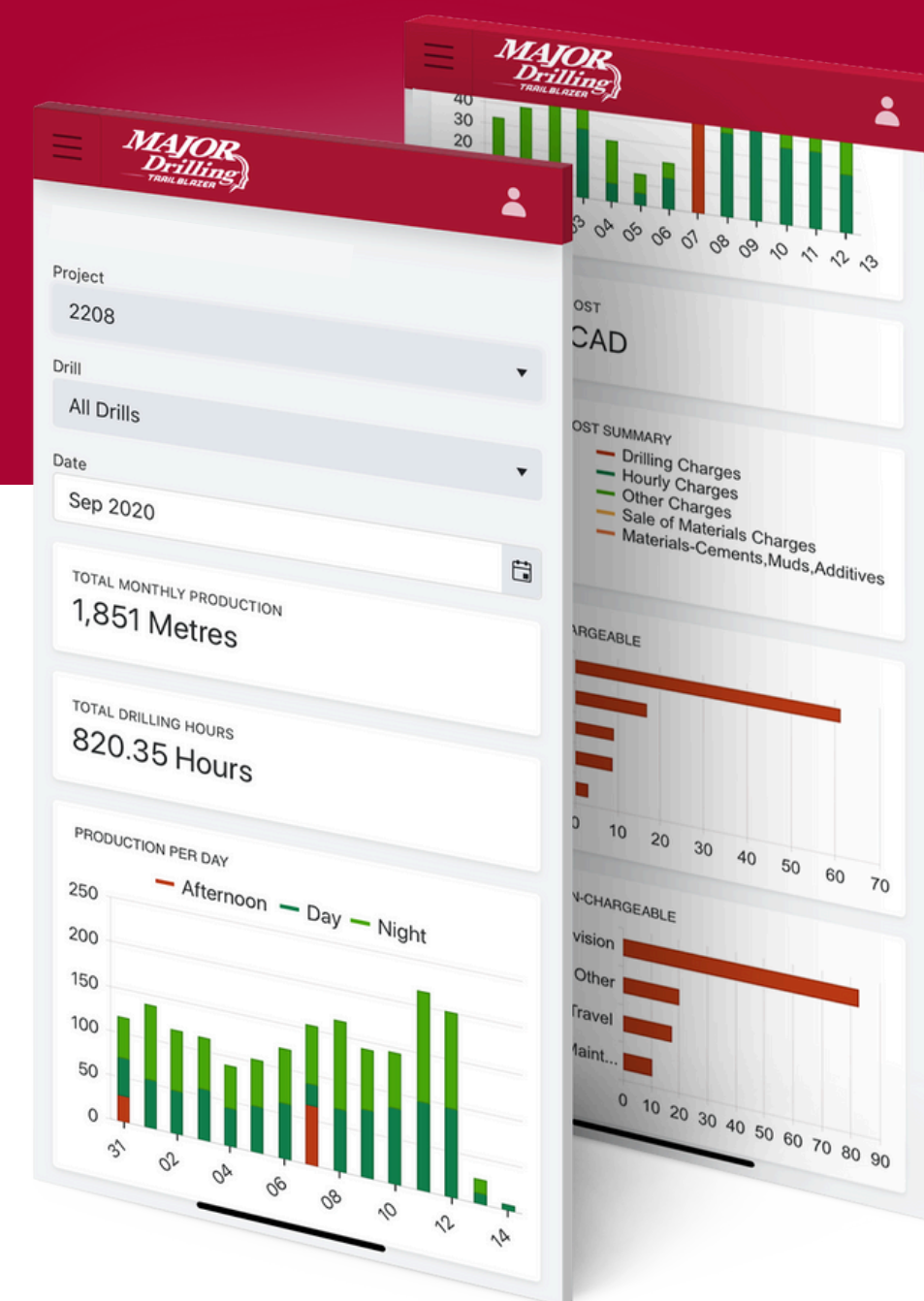


# Introduction

## MTB Portal & MTB Mobile

### Capturing Real Results On *and* Offline

MTB Mobile & Portal enables crews to capture daily drilling reports electronically from the field and submit them directly into our Time & Billing System for access to real-time data available anywhere. This allows clients to review, comment, and approve details at the touch of a button.



# MTB Mobile & Portal Key Features



Customize Your Reports



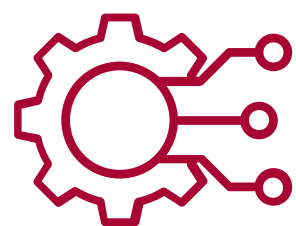
Track Key Metrics for Operations



Submit Data Electronically for Instant Access



Enter Data from Remote Locations



API capabilities allow information to be fed to any other platform



Access MTB Portal from any device





## Who Benefits from MTB Mobile & Portal?

MTB Mobile can be accessed from any device, including a laptop, tablet, or phone, and can be used from remote locations when not connected to the internet.

## Our Crews

By allowing crews to **enter data from remote locations without an internet connection**, we are eliminating delays in data input and leaving less space for error when supervisors submit time and billing data at a later date. With our offline input capabilities, as soon as the device is back online crew members can open the app to their saved shifts and **submit the data electronically**.

## Our Clients

Our platform provides clients with access to **instant reports on several key performance metrics**, such as staff activity detail, target per shift reached, total drilling production, and total drilling hours. With our dedicated team, your requests will be met attentively and timely, **adapting reports and functionality to your requirements**.

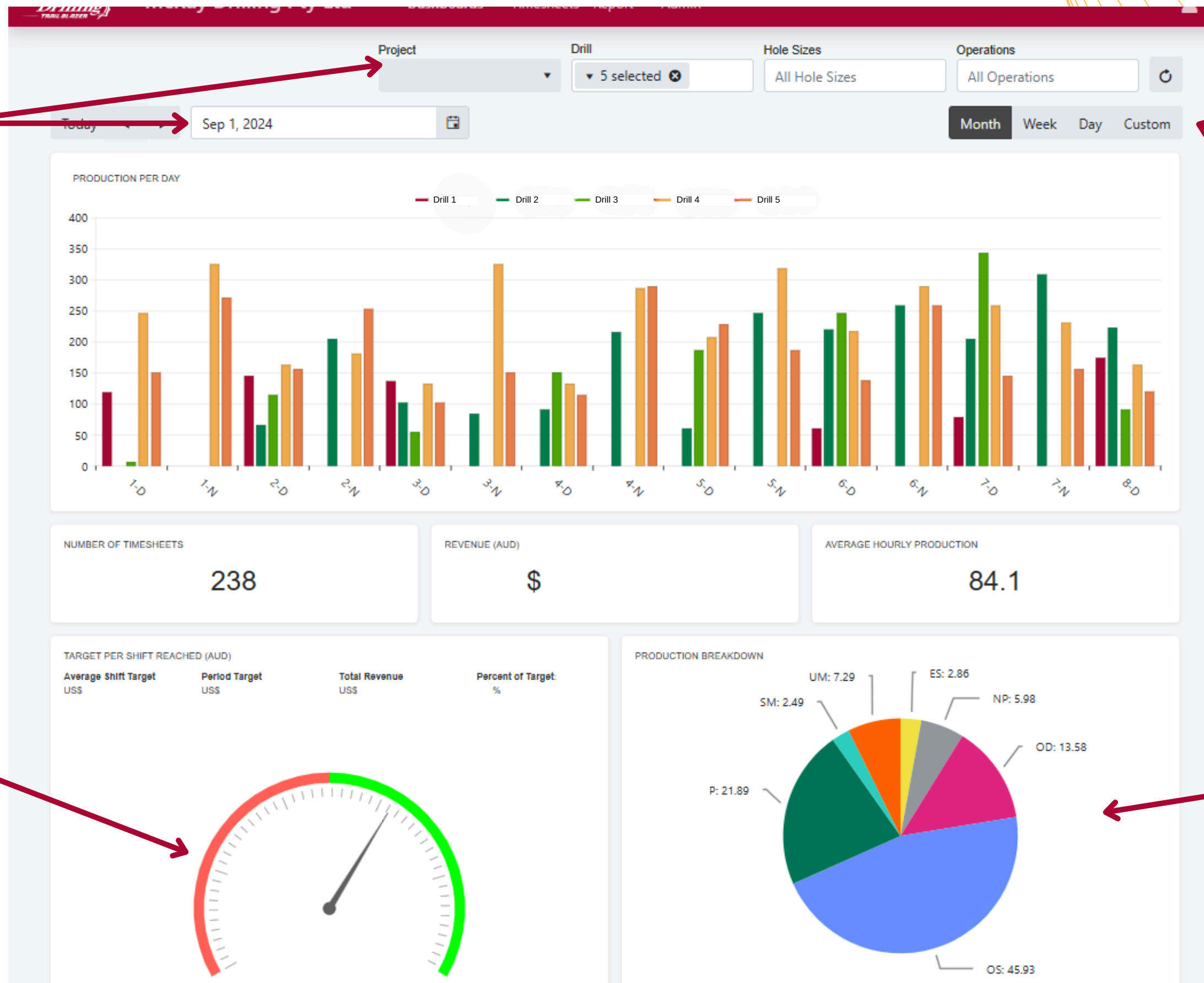
## The Drilling Industry

Built on 20 years of experience with MTB globally, our system is designed to integrate with our client applications through **sophisticated API and customizable reports**. Providing you with access to your data, however you need it, **in a secure environment**. We believe that allowing for system interconnectivity is essential to promote industry innovations.

# Production Dashboard Metrics



Customize by Date, Project, and Drill



View reports by Month, Week, Day, or a Custom date range

Target per Shift Reached

Production Breakdown

# Reports



Customize reports by Project and Drill

View reports with a custom date range

From: Oct 1, 2024 To: Oct 31, 20...

Project: FMG DEV RC32 CO-CP-001

Drill: 6 selected

Format: PDF

Report: Delay vs Working Hours

Contract Non-chargeables

Contracts Specialized Data

**Delay vs Working Hours**

Drill Footage by Operation

Drill Hours and Footage

Driller Average Production

Page 1 of 13

Delay vs Working Hours

From: 2024-10-01 To: 2024-10-31

Charge Type Hours for Contract:FMG DEV RC32 CO-CP-001 and Drill: MKY0003

Travel Rate (\$641.82) Track Rig Move (\$967.56) Survey Rate (\$720.30) Standby Rate (\$641.82) No Charg

Date	Travel Rate (\$641.82)	Track Rig Move (\$967.56)	Survey Rate (\$720.30)	Standby Rate (\$641.82)	No Charg
10 01	1.5	3.5	1.5	1.5	1.5
10 02	1.5	3.5	1.5	1.5	1.5
10 03	1.5	3.5	1.5	1.5	1.5
10 04	1.5	3.5	1.5	1.5	1.5
10 05	1.5	3.5	1.5	1.5	1.5
10 06	1.5	3.5	1.5	1.5	1.5
10 07	1.5	3.5	1.5	1.5	1.5
10 08	1.5	3.5	1.5	1.5	1.5
10 09	1.5	3.5	1.5	1.5	1.5
10 10	1.5	3.5	1.5	1.5	1.5
10 11	1.5	3.5	1.5	1.5	1.5

Choose the report you want from the drop down list

Preview selected report

# Calendar View



Filter submissions by status

Export all the timesheet data to a workbook

Click on each shift to get a summary of Shift Details, including time and resources used

Project		Drill							
		All Drills	🔄						
Draft		Reviewed	Approved	Verified	Invoiced	Export All	All	Calendar	List
Today		October 2024		Month	Week	Day			
Sunday	Monday	Tuesday	Wednesday	Thursday	Friday	Saturday			
29	30	Oct 01	02	03	04	05			
		Day	Day	Day	Day	Day			
				Night	Night	Night			
06	07	08	09	10	11	12			
Day	Day	Night	Day	Day	Day	Day			
Night	Night		Night	Night	Night	Night			
13	14	15	16	17	18	19			
Day	Day	Day	Day	Day	Night	Day			
Night	Night	Night	Night	Night	Night	Night			
20	21	22	23	24	25	26			
Night	Night	Day							
		Night							
27	28	29	30	31					
03	04	05	06	07					



# Trailblazer Solutions Suite

These other offerings are designed to enhance the efficiency, safety, and sustainability of drilling projects.

**MAJOR**  
*Drilling*

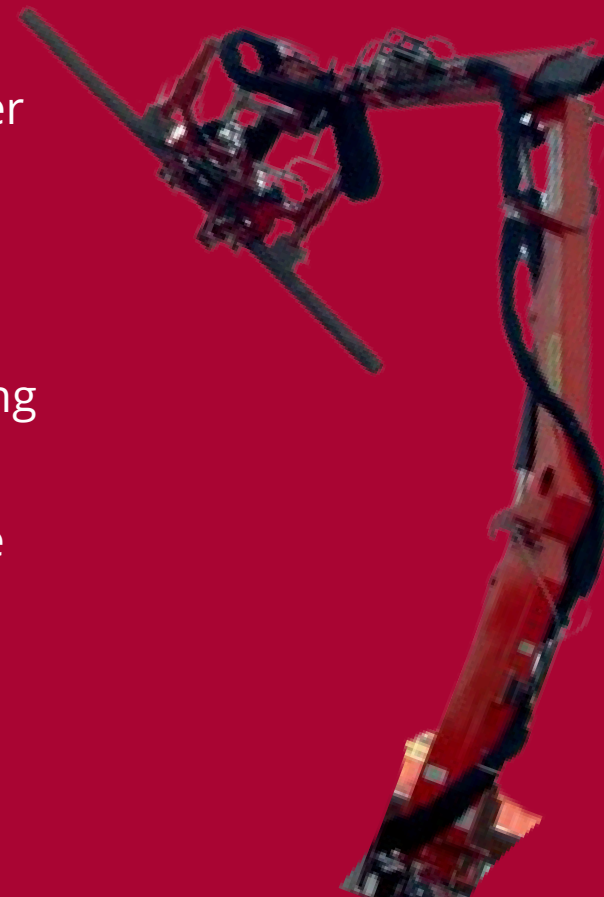
## Rock5

Our advanced Rock5 technology optimizes drill performance and safety. With adaptability to various drill models, it offers an in-house designed dashboard that tracks drill function pressures, water usage and much more.



## SafeGrip

Our in-house rod handler solutions offer advanced safety, providing equipment and capabilities that ensure secure handling and operation during drilling activities while maintaining productivity.



## AquaLink

A cutting-edge solution for water management in drilling projects, AquaLink enhances water usage efficiency and sustainability.





# Global Capabilities

Major Drilling is a leading **specialized drilling** company with a global presence, delivering exceptional results on the toughest sites. Leveraging our extensive experience, modern diversified drilling fleet, and commitment to **safety**, we **partner** with customers **worldwide**.

Our services include surface and underground drilling, directional drilling, dewatering, and more, ensuring quality, safety, and outstanding results. With branch locations across North and South America, Europe, Africa, Asia, and Australia, Major Drilling is equipped to meet the unique needs of every project.

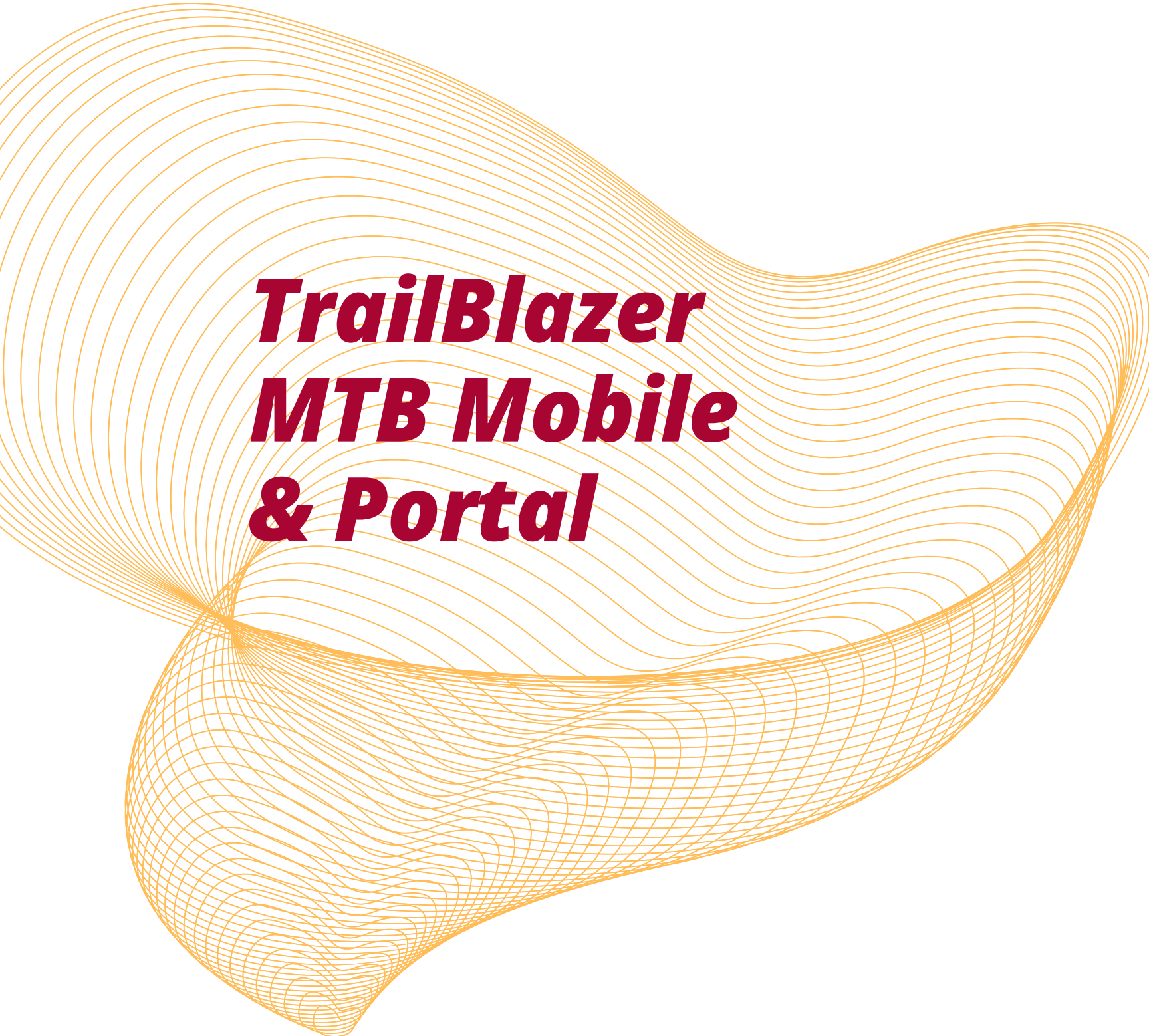
**MAJOR**  
*Drilling*



OVER  
**700**  
DRILLS

MORE THAN  
**5000**  
EMPLOYEES

OPERATING ON  
**5**  
CONTINENTS

A large, abstract graphic on the left side of the slide, composed of many thin, overlapping orange lines that form a wavy, ribbon-like shape.

***TrailBlazer  
MTB Mobile  
& Portal***

**Questions?**

**Thank you!**

[www.majordrilling.com/geosolutions](http://www.majordrilling.com/geosolutions)