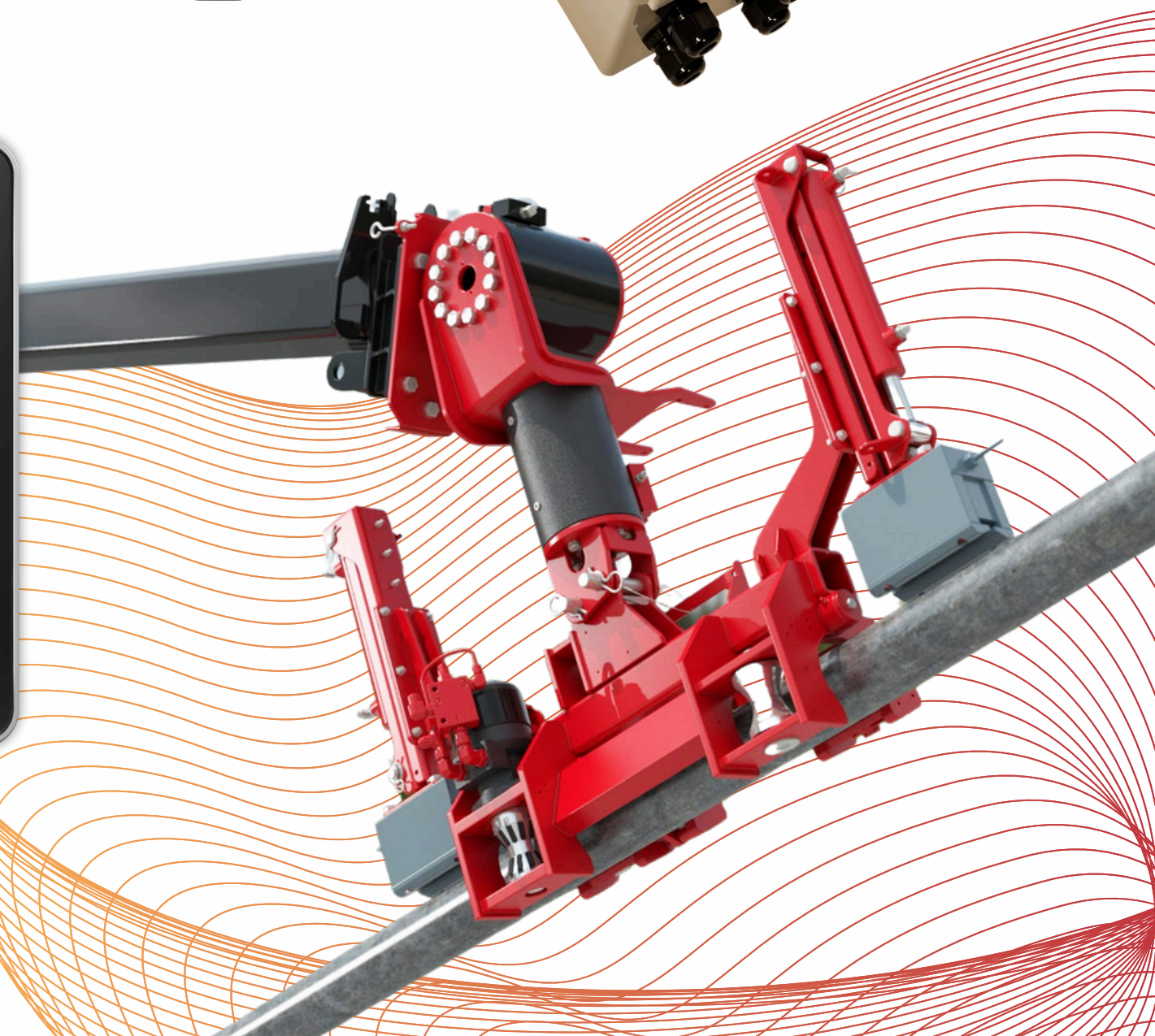
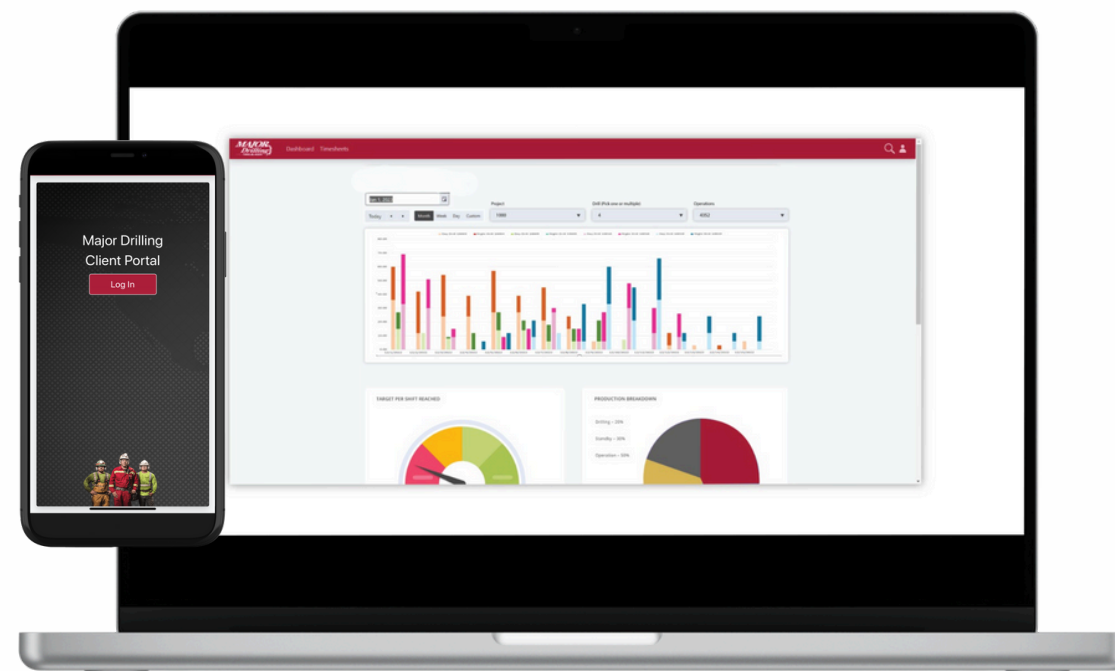


MAJOR Drilling TRAILBLAZER





Introduction

TrailBlazer Rock5

We're optimizing drill performance with our advanced Rock5 technology.

With adaptability to various drill models, it offers an in-house designed dashboard that tracks drill function pressures, water usage and much more!

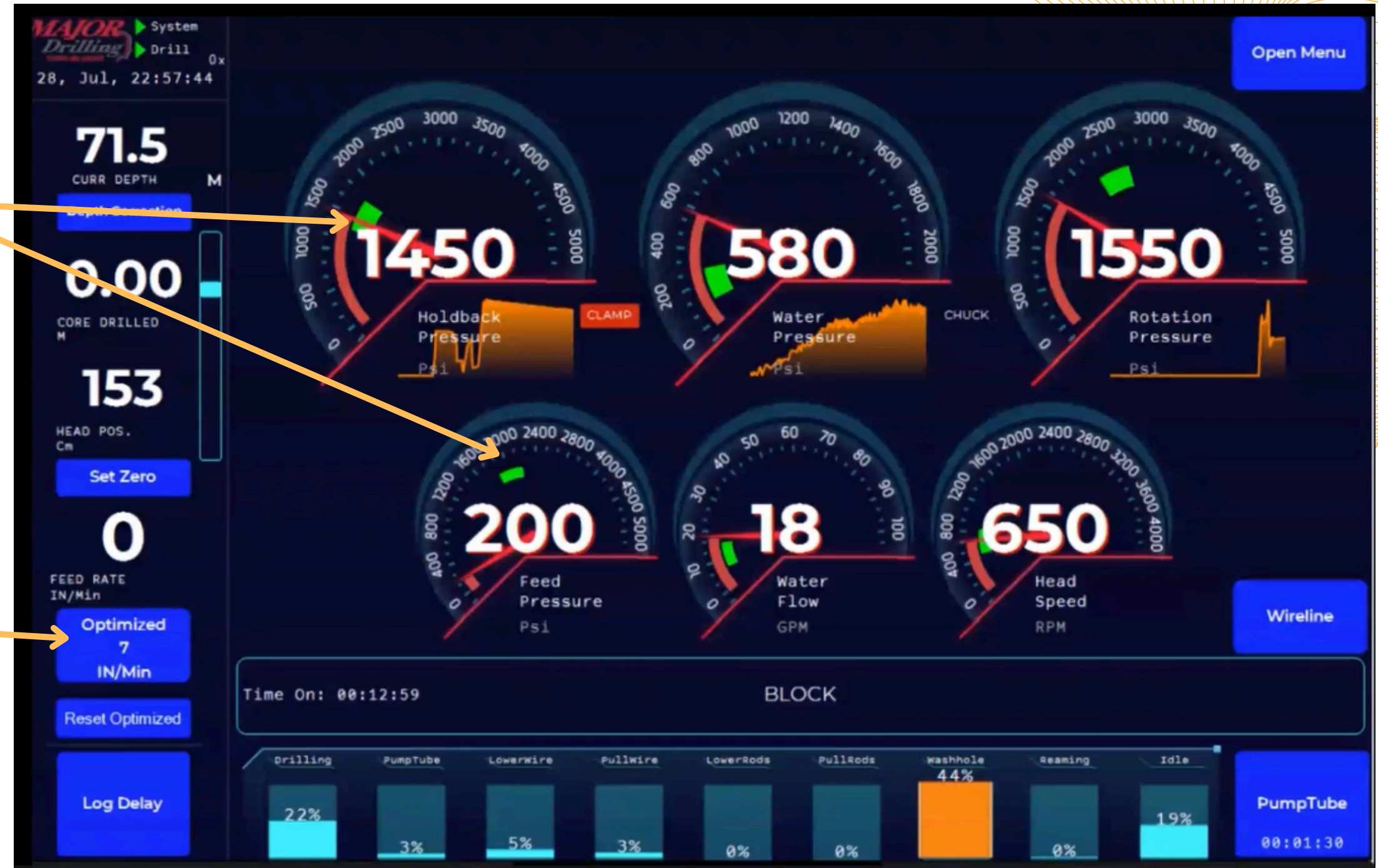


Dashboard Metrics

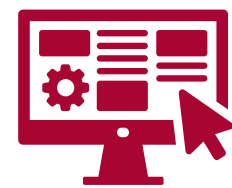


Target drilling parameters to achieve optimal penetration rate

Calculated optimal penetration rate



Rock5 Key Features



User-friendly interface



Flattens training curve
for drill teams



Real-time data



Improves preventative
maintenance strategies



Maximizes tool life

Rock5 In the Field



*MAJOR
Drilling*

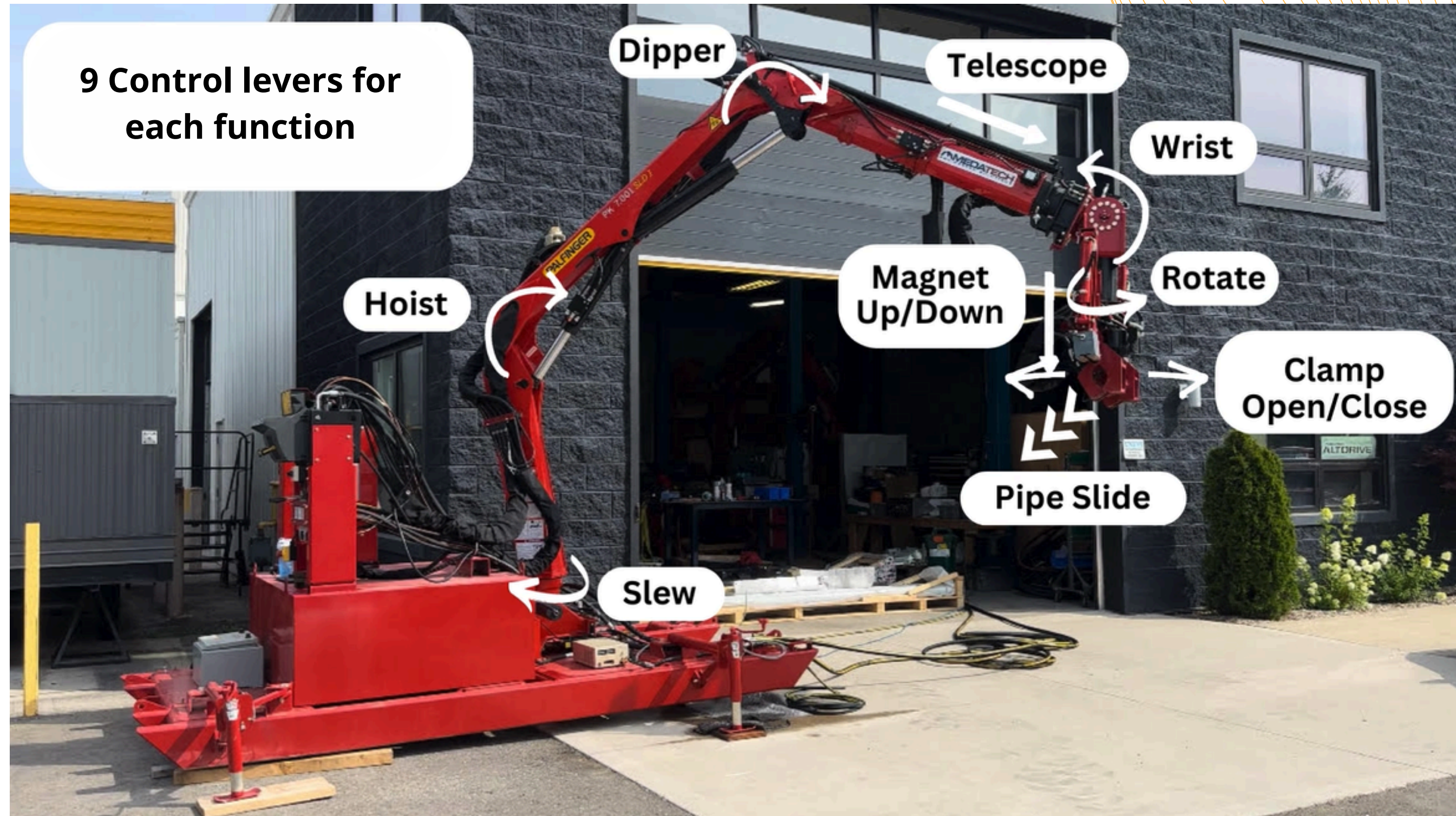
Introduction

TrailBlazer SafeGrip

Enhanced Safety while maintaining efficiency in drilling operations.

The SafeGrip is an innovative hands-free rod handling solution designed to enhance safety and efficiency in drilling operations, exclusive to Major Drilling.



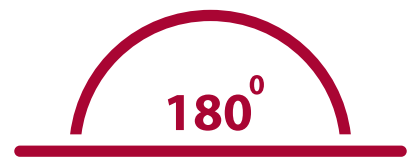


SafeGrip Key Features

MAJOR
Drilling



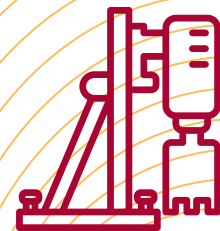
Automation Capabilities



180° versatility on seven different axes



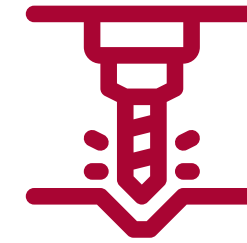
Enhanced Safety



Compatible with all rod sizes



Ability to handle uneven terrain



Adaptable to various types of exploration drills



Increased Drilling Efficiency



Carrying weight capacity of 3300 kg

Additional Hands-free Rod Handling Solutions offered by Major Drilling

MAJOR
Drilling



NextDrill



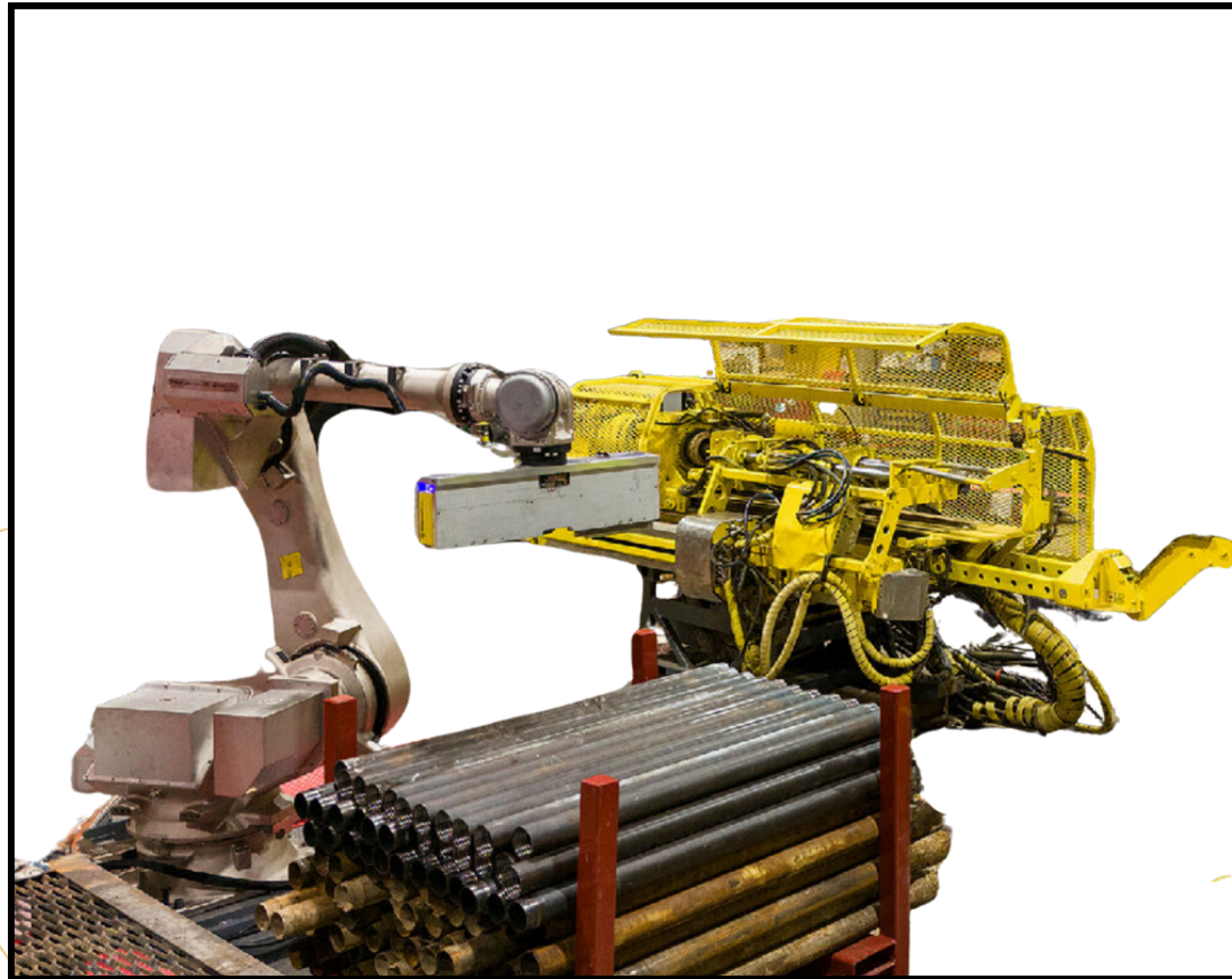
BLY Freedom Loader



Epiroc UG drill rod handler

Additional Hands-free Rod Handling Solutions offered by Major Drilling

MAJOR
Drilling



UG Robot



EDM MK2 Rod Handler

...and more!

*MAJOR
Drilling*

Introduction

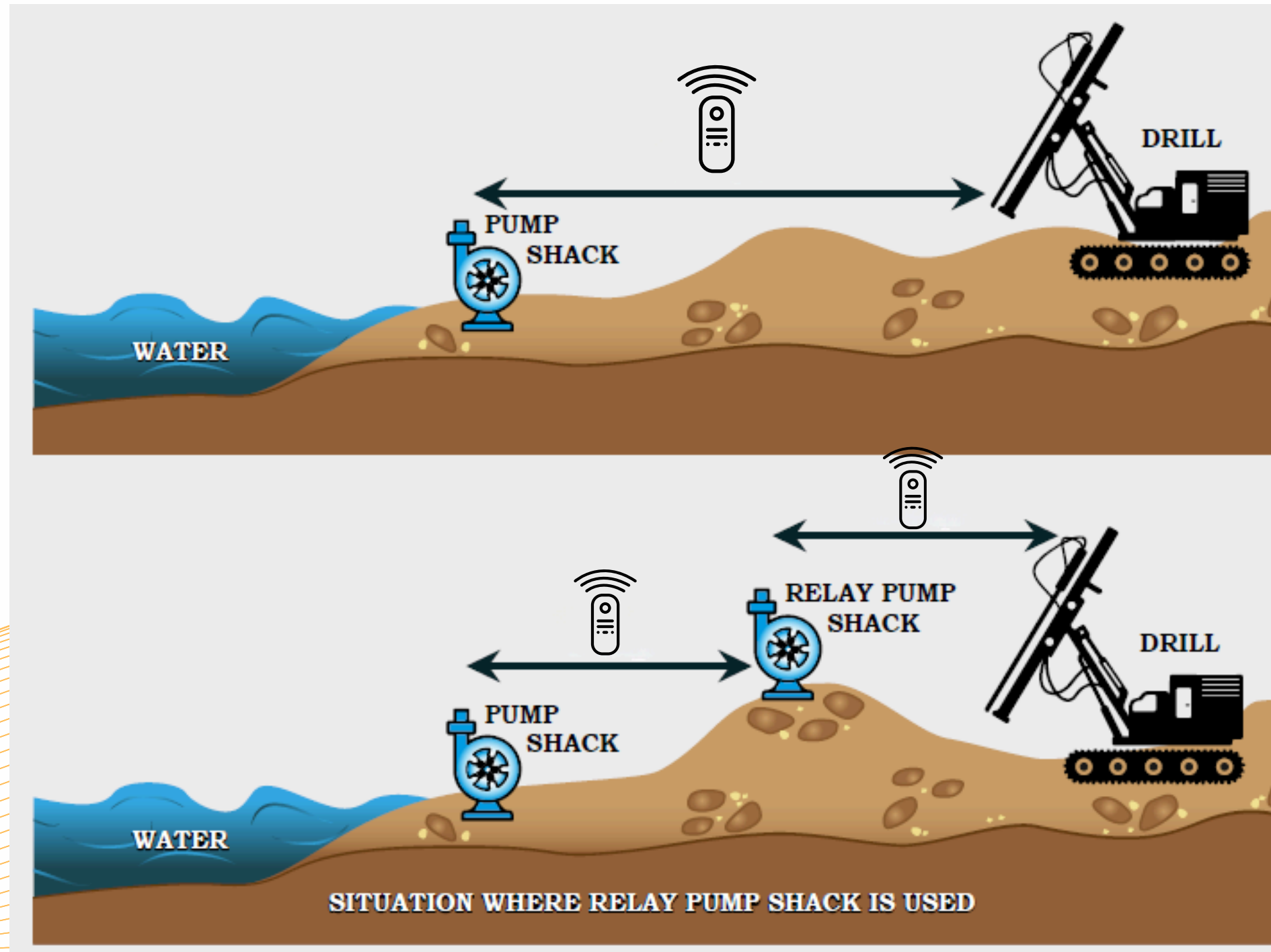
TrailBlazer AquaLink

We're maximizing efficiency and minimizing environmental impact

Our unique control system allows you to remotely control and monitor the state of your drill's water supply pump system, ensuring optimal water management and operational efficiency.



How AquaLink works: Radio Signal Remote Control*



*Tested up to 9km in distance in even, unobstructed terrain

Dashboard Metrics



The dashboard displays various metrics for the MAJOR Drilling TRAILBLAZER system. It includes a central image of the device and several data points with callouts:

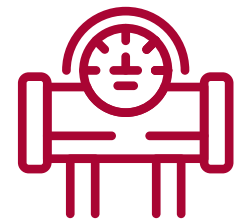
Metric	Value
Remote Power Monitoring	13V
Real Time Data	96%
Water flow tracking	110 L/min
Temperature tracking	26°C (Air), 5°C (Water)
Fuel Monitoring	67%
Volume tracking	00942.3 t
Water Pressure tracking	54 psi
Request Assist	SET: 30, ACT: 0

AquaLink Key Features

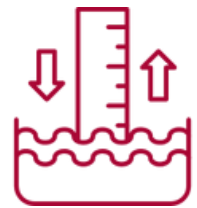
MAJOR
Drilling



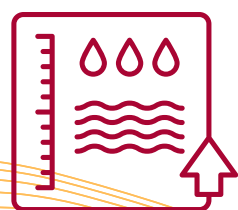
Remote adjustment of water flow in real-time



Water intake measurement from the source (keeping the totals)



Water volume at the source (keeping the totals)



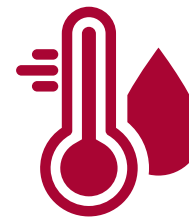
Volume recording project totals



Fuel level monitoring



Ambient temperature at the source



Water temperature at the source and destination



Water Pressure at the source to detect leak



Motor fan belt failure alarm; battery and alternator voltage alarm



Paging between shacks

AquaLink Remote Valve

MAJOR
Drilling

Our AquaLink Remote Valve control system is designed to adjust the volume of the delivered water from source to the drill; allowing the operator **wireless control over the amount of consumed water** over long distances. The system allows water flow to be continuous, protecting the pump from overloading. While the three-way valve enables excess water to be returned back to the source.



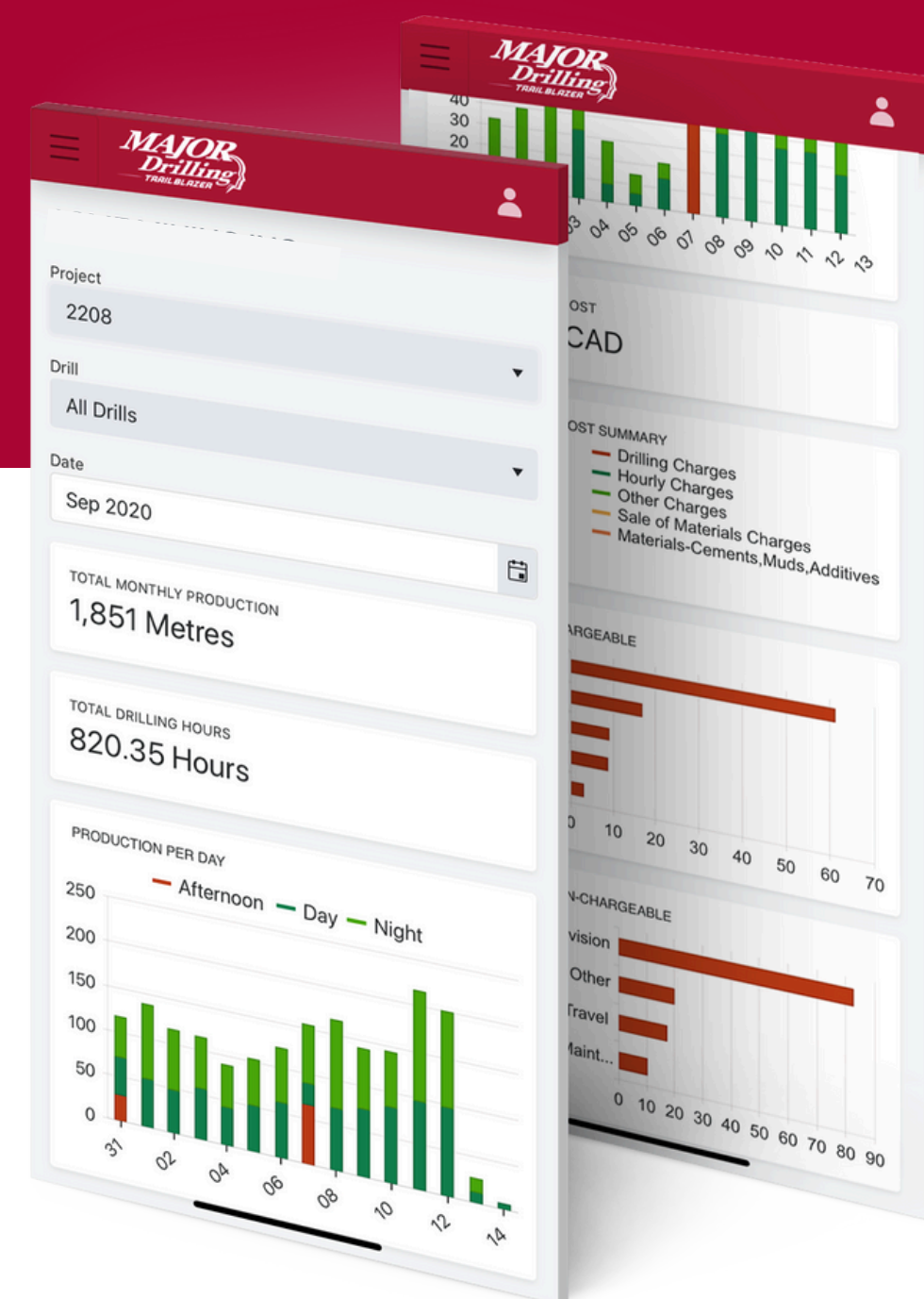
AquaLink in the Field



Introduction

MTB Portal & MTB Mobile Capturing Real Results *On and Offline.*

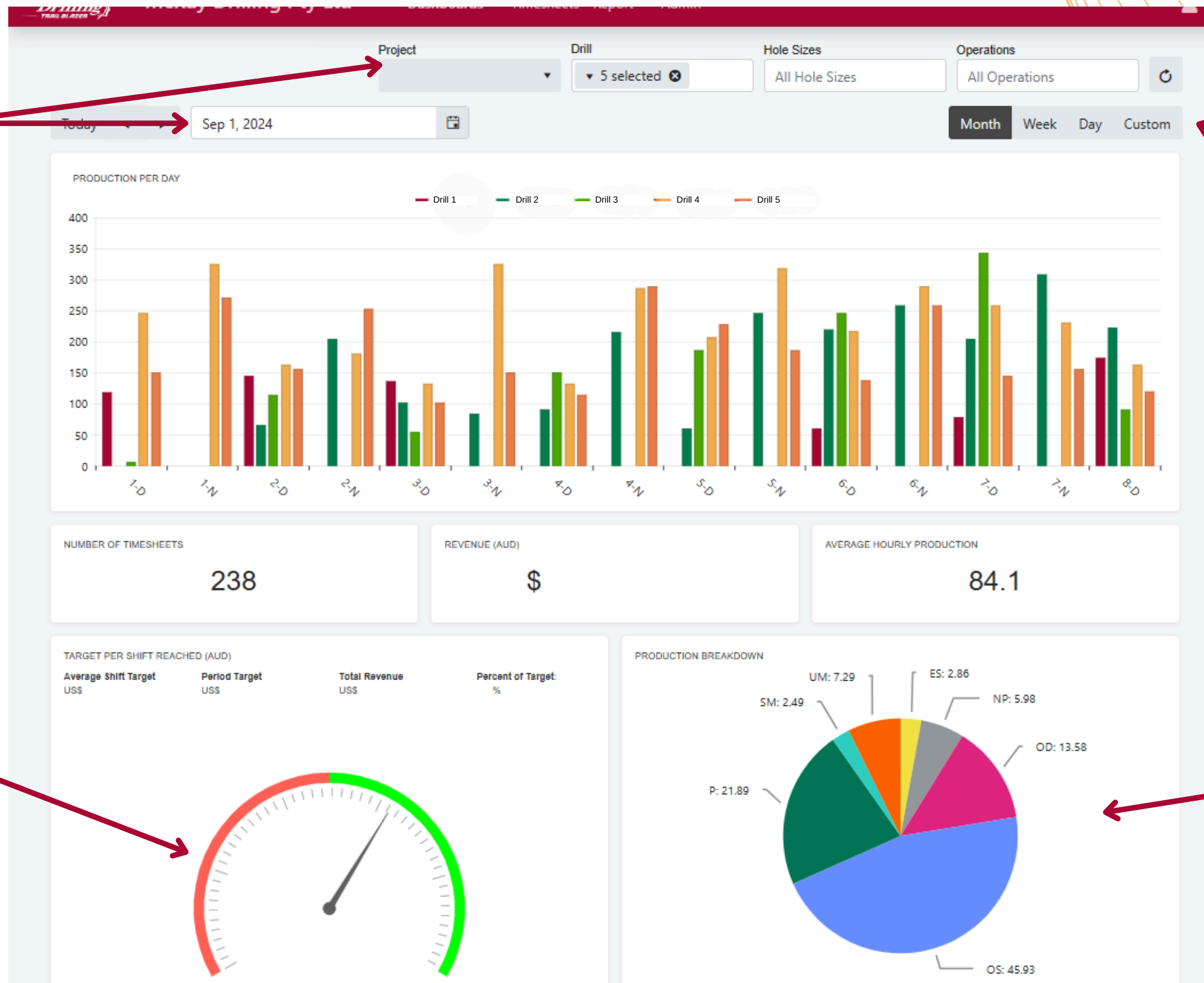
MTB Mobile & Portal enables crews to capture daily drilling reports electronically from the field and submit them directly into our Time & Billing System for access to real-time data available anywhere. This allows clients to review, comment, and approve details at the touch of a button.



Production Dashboard Metrics



Customize by Date, Project, and Drill



View reports by Month, Week, Day, or a Custom date range

Target per Shift Reached

Production Breakdown

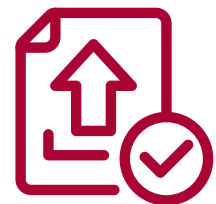
MTB Mobile & Portal Key Features



Customize Your Reports



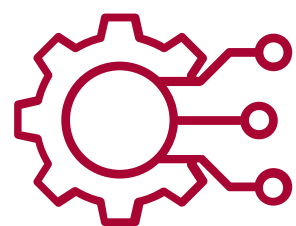
Track Key Metrics for Operations



Submit Data Electronically for Instant Access



Enter Data from Remote Locations



API capabilities allow information to be fed to any other platform



Access MTB Portal from any device



Questions?

Thank you!

www.majordrilling.com/geosolutions